



NEWSLETTER NO.4

January 2026

Headteacher: Mr J Cox

An Inspiring Place to Grow, Believe and Achieve Life in All its Fullness.

office@ferring.w-sussex.sch.uk 01903 243945

John 10:10

Head's Message

Dear Parents, Carers and School Friends

As we approach the end of January, it is hard to believe how quickly the spring term is already moving forward. The school has once again been full of purpose, enthusiasm and warmth, with children and staff settling confidently back into routines and embracing new learning opportunities.

I continue to be incredibly proud of our whole school community and the way we live out

our shared vision at Ferring Church of England Primary School: 'An inspiring place to grow, believe and achieve life in all its fullness' (John 10:10). This vision remains at the heart of everything we do and is clearly reflected in the care, commitment and positivity seen across the school each day.

Over the past few weeks, staff and children have continued to explore how we grow with love, believe with hope and achieve with joy. By consistently following our school rules—ready, respectful and safe—our pupils are developing as confident 'agents of change', contributing to a school community where everyone feels valued and supported to flourish.

As we move further into the year, I look forward to building on these strong foundations and working together to ensure the very best outcomes and experiences for all of our children. Thank you, as always, for your continued support.

With warmest wishes,

Mr J Cox

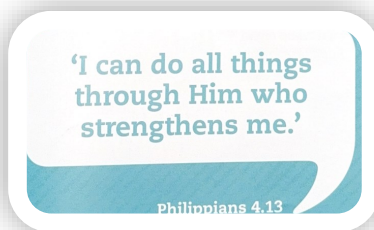


Collective Worship

Each half term, collective worship will focus on a particular Christian value. Reverend Robin and Reverend Shirley will lead worship in school on Wednesdays.

This half term our worship focus is: **Perseverance**

'By perseverance, the snail reached the ark'



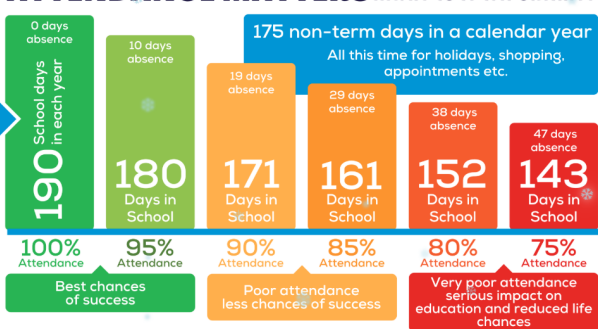
Spring Term: Believe with **Hope**

Perseverance

Forgiveness

365 days in a calendar year

ATTENDANCE MATTERS ...WHY IS IT IMPORTANT?



DID YOU KNOW? A two week holiday in term time means that the highest attendance you can achieve is 94.7%

ATTENDANCE MATTERS



Every school day counts BUT every minute is equally important!

Hall of Fame

Each week on a Friday, we will celebrate children who have lived out our school vision. Those who have demonstrated growing with love, believing with hope and achieving with joy will be inducted into our Ferring Hall of Fame. Pictures of our school's wonderful role models will be on our Hall of Fame display in our school reception area and a certificate will come home to celebrate each child's individual achievement.



If your child has achieved something outside of school e.g. a swimming **certificate**, gymnastics **medal**, football **trophy**, cubs **badge**...then we would love to celebrate that too. To take part, children need to bring in their items to celebrate on a Friday morning and hand them to their class teacher.

Hall of Fame 9.1.26

Reception: Wynter H
Year 1: Isla H
Year 2: Huxley L
Year 3: Coralie M
Year 4: Marissa H
Year 5: Stanley M
Year 6: Ayla C

Hall of Fame 16.1.26

Reception: Isla K
Year 1: Otto R
Year 2: Peightonn G
Year 3: Theo S
Year 4: Ella W
Year 5: Marnie M
Year 6: Amelie S

Hall of Fame 23.1.26

Reception: Finley B
Year 1: Marley G
Year 2: Eleanor GS
Year 3: Teddie S
Year 4: Evie N
Year 5: Ollie B
Year 6: Rowan V

Hall of Fame 30.1.26

Reception: Louie B
Year 1: Mollie S
Year 2: Armani BW
Year 3: Thea W
Year 4: Max B
Year 5: Darcie G-B
Year 6: Anya C

House Captains—Spring 2026

We are thrilled to introduce our house captains for the Spring term:

Ruby House - Landon N & Zanna C

Emerald House - Lucia E & Joseph L

Sapphire House - Autumn C & Quinn B

Topaz House - Monty M & Amelie S

House captains will lead their houses in house assemblies, preparing their fellow house mates for inter-house competitions and keeping up with the all important house point tally from across the school.



House Points 30.1.26

Ruby House = 388

Emerald House = 343

Sapphire House = 456

Topaz House = 363

SOFSAs House Colours Day - 'bottle donations'

Friday 6th February 2026

Children are invited to come to school with their top half showing off their house colours in exchange for a bottle for SOFSA's bottle tombola. (T-Shirt, jumper, shirt, blouse, jacket etc)

Please ensure children do not come to school in a complete set of home clothes. It is only their top half that should show off their house colours.

Thank you for your continued support!



Young Voices 2026



Pupils spoke about the “Young Voices memories that will stay with them forever” and “the overwhelming sense of pride when hanging our school’s flag at the O2 Arena and joining pupils from across the country to blow the socks off our audience.”

“There are no words to truly describe the show that took place that evening,” comments Mrs. Spencer. “The overwhelming joy, energy and sense of achievement on the children’s faces said it all. Performing on such a prestigious stage was an unforgettable experience and a moment of pride for the pupils, staff and families of Ferring CE Primary School — a memory that will stay with them for years to come.”



THANK YOU !

We are thrilled to open up our newly resurfaced gym equipment thanks to the generous donations from Ferring’s Baptist Church and SOFSA . Even the torrential downpours throughout January haven’t stopped our break times or sensory circuits on our new surface!



We are also incredibly grateful to Mr Francis, Mr Watts, Mr Jackson, and Mr O’Callaghan for their fortitude and commitment in taking on the mammoth task of clearing and preparing one of our studio classrooms for a much-needed renovation and upgrade. Exciting plans are already in the pipeline for this space, and our pupils will soon be benefiting as a direct result of the time, effort, and generosity of these wonderful parents.



Spot Light on Sport



Locality KS1 Multi-Skill Champions

Locality Year 3,4,5 and 6 Indoor Athletes

Locality Year 3 and 4 Football Teams

Locality Year 5 X Country Runners—*Alaska B qualified for the Southern Area Finals!*

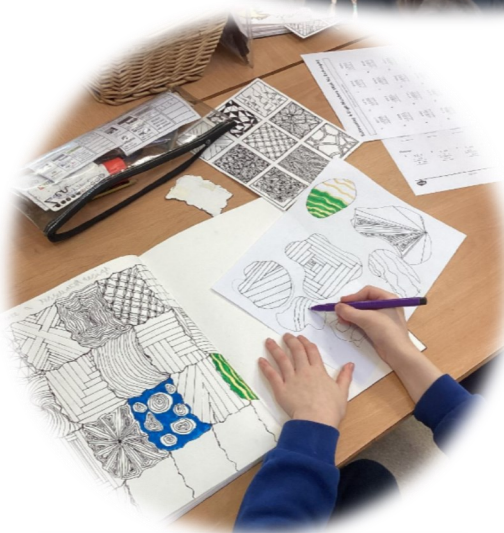
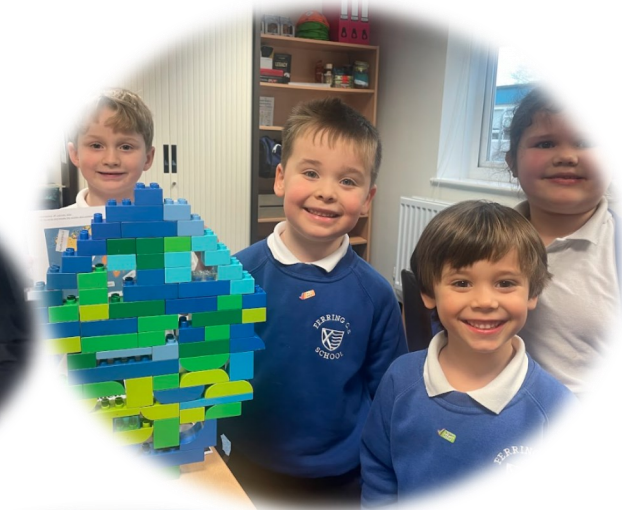
If you would like to discuss opportunities for your child to participate in these locality events, please email office@ferring.w-sussex.sch.uk

A Window Into Our Curriculum



Newsfeed—Reach More Parents, Weduc

This term, teachers will use the 'Newsfeed' on Reach More Parents to give our school community a window into your child's learning and our school's engaging curriculum. This has replaced all communications on Class Dojo as we continue to use Reach More Parents, Weduc, as our sole communication platform to parents.



Ferring Church of England Primary School

An Inspiring Place to Grow, Believe and Achieve Life in All Its Fullness. John 10:10




Curtain Call Academy
Performing Arts Workshops!

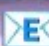
KPOP DEMON HUNTERS


Curtain Call Academy -
Performing Arts -
K-Pop Demon Hunters Workshops!
Ages 4-16 years - £20
Monday 16th February 2026

 Goring United Reformed Church, BN12 4EA

 Monday 16th February 2026

 08:30-12:30

 curtaincallacademy@outlook.com

 [curtaincallworthing](#)



£20

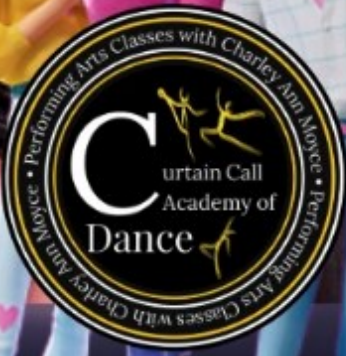
FEBRUARY HALF TERM PERFORMING ARTS WORKSHOP

Curtain Call Academy Award Winning Performing Arts School

POP PARTY DANCE WORKSHOP!

THURSDAY 19TH FEBRUARY - AGES 4-16 YEARS
08:30-12:30
GORING UNITED REFORMED CHURCH, BN12 4EA

LEARN DANCES TO YOUR FAVOURITE POP
SONGS, UV GLOW STICK DISCO, PARTY GAMES!



Goring United Reformed Church
Thursday 19th February | 08.30-12.30
curtaincallacademy@outlook.com

curtaincallworthing



Parenting Mental Health Support Service Online Evening Groups

Expert by Experience presentations- 19:30-21:30

(including time for Q & A)

Peer support groups - 19:30-21:00

Date	Group Topic
Weds 7 th Jan '26	Peer Support
Weds 21 st Jan '26	Supporting children/young people's self esteem
Weds 4 th Feb '26	Peer Support
Weds 18 th Feb '26	Supporting children/young people in a digital world
Weds 4 th March '26	Peer Support
Weds 18 th March '26	Supporting children/young people who self harm

To book onto any of our expert by experience presentations please visit our training page on; www.westsussexmind.org

(If you are already signed up to the Parenting Service, please use the Zoom link provided).

To access the online peer support groups you need to have signed up to our service already. You can do this by calling our Help Point Monday to Friday, 10am until 4pm on 0300 303 5652 or email; helppoint@westsussexmind.org



We are a friendly, supportive group and there is no pressure to share if you don't feel comfortable to do so.

Parenting Peer Support Drop-ins Winter/Spring 2026 Timetable

New
locations
added



If you are a parent or carer to a child or young person who needs some support with their mental health, you may not know where to start and may need some support of your own. There is no criteria for our drop-in groups, so no concern is too small or too big.

We at West Sussex Mind know how vital it is for people to talk and share their experiences, so we have started Peer Support drop-ins across the county, where you can meet our Parenting Team and other parents who can provide some much needed empathy and understanding.

Online parenting support drop-ins:

10:00-11:00am

- Tuesday 13th January
- Tuesday 10th March
- Tuesday 7th April

Zoom Meeting ID: 869 2437 6726

Passcode: 131440

Please feel free to drop-in where we can chat and get you registered with the service.

Or to register yourself, please call our Help Point Monday to Friday, 10am until 4pm on 0300 303 5652

or email helppoint@westsussexmind.org

Or for more information, please contact parentingsupport@westsussexmind.org

Come and join us in:

Worthing

The Gateway, 8-10 Durrington Lane,
BN13 2QG

13:00 - 14:00

- Tuesday 6th January
- Tuesday 10th February
- Tuesday 24th March

Chichester

Family Hub (The Green Room),
St James' Rd, Chichester PO19 7WX
(NB: For SatNav use PO19 7HY)

10.00-11.00

- Thursday 15th January
- Thursday 19th February
- Thursday 26th March

Haywards Heath

Mid Sussex Family Hub, 51 Penn Cres,
Haywards Heath, RH16 3HP

11.00-12.00

- Tuesday 20th January
- Tuesday 24th February

Please note, due to the sensitivity of our discussions, we ask that you attend without your child/young person.



LODGE HILL SEND DAY

WEDNESDAY
18TH
FEBRUARY

10AM - 3:30PM

Lodge Hill Centre,
Pulborough

For families in West Sussex with a child under 18 with additional needs/ disabilities



ACTIVITIES ON THE DAY:

- Abseiling
- Archery
- Climbing
- Low Ropes
- We Cycle Too Bikes
- Sno-tubing
- Orienteering
- Nature Trail
- Arts and crafts
- Freedom Through Fun with Chris North
- Woodland Crafts with Forest Knights



**BOOK VIA
OUR WEBSITE
NOW!**



LODGEHILL.ORG.UK



HOLIDAY RACQUETS CAMPS

Fun activities for children aged 4-16 years, every school holiday.

Sessions for beginners and improvers may be booked online.



www.wwc.org.uk/holiday-activities

Do I need to keep my child off school?

Chicken Pox

Until all spots have crusted over

Conjunctivitis

No need to stay off but school or nursery should be informed

Diarrhoea & Vomiting

48 hours from last episode

Glandular Fever

No need to stay off but school or nursery should be informed

Hand, foot & mouth

No need to stay off but school or nursery should be informed

Impetigo

Until lesions are crusted & healed or 48 Hours after commencing antibiotics

Measles or German Measles

4 days from onset of rash

Mumps

5 days from onset of swelling

Flu

Until recovered

Scabies

Until after first treatment

Head Lice

No need to stay off but school or nursery should be informed

Scarlet Fever

24 hours after commencing antibiotics

Threadworms

No need to stay off but school or nursery should be informed

Slapped Cheek

No need to stay off but school or nursery should be informed

Tonsillitis

No need to stay off but school or nursery should be informed

Whooping Cough

48 Hours after commencing antibiotics